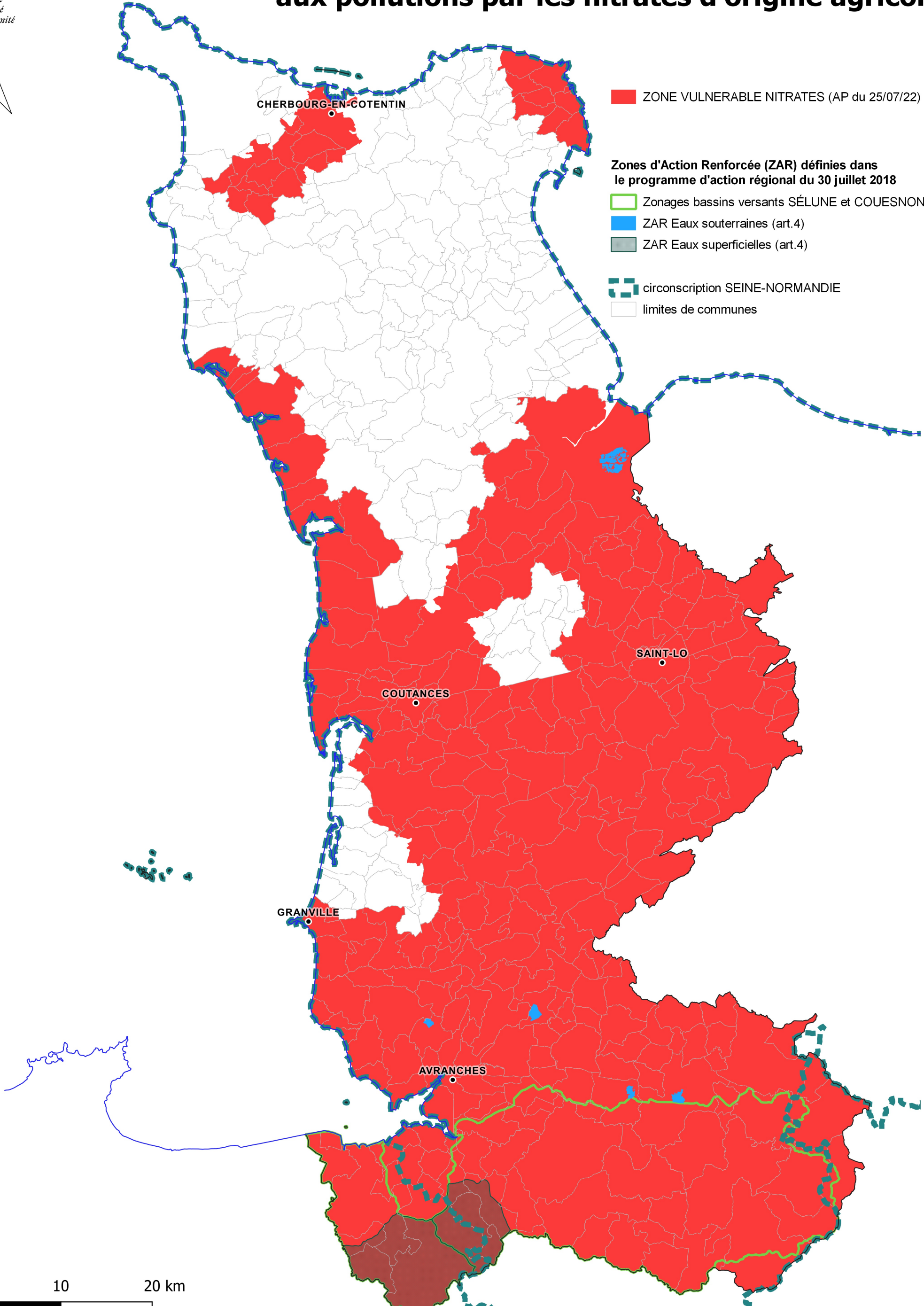
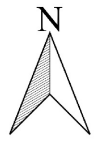



# ZONES VULNÉRABLES aux pollutions par les nitrates d'origine agricole





 ZONE VULNERABLE NITRATES (AP du 25/07/22)

Zones d'Action Renforcée (ZAR) définies dans le programme d'action régional du 30 juillet 2018

 Zonages bassins versants SÉLUNE et COUESNON (art.3)

 ZAR Eaux souterraines (art.4)

 ZAR Eaux superficielles (art.4)

 circonscription SEINE-NORMANDIE

 limites de communes

0 10 20 km